



11685 Main Street
 Williston, SC 29853
 www.dixienarco.com

M065.0

Dixie-Narco HVV Upper Security Hasp Field Installation

April 27, 2004

Models Affected: All HVV

Reason: To provide instructions to install an Upper Security Hasp that provides enhanced security and secondary access control.

Order: HVV Wide Vender Upper Security Hasp Kit 592,154,40x.x4
 HVV Narrow Vender Upper Security Hasp Kit 592,154,30x.x4

Introduction:

Note that all field replacement kits will be painted blue. Read entire instructions before beginning installation.

Tools needed:

- 7/16" deep well socket and ratchet
- cordless drill and .3125 drill bit
- hammer and center punch
- 2 ea 15" strips of masking tape
- stable ladder on a safe surface
- vacuum or cleaning rag
- use of assistant (spotter) is recommended

Part Number	Description	Wide Qty	Narrow Qty.
631,051,18x.x3	Side Tab, Combo	1	1
493,070,07x.x3	Side Tab Cover Plate	1	1
800,303,19x.x1	Carriage Bolt 1/4 -20x5/8	2	4
900,800,67x.x1	Nut 1/4-20	2	2
631,051,19x.x1	Lower Hasp	1	1
900,201,45x.x1	Carriage Bolt 1/4-20x1/2	4	4
900,800,67x.x1	Nut 1/4-20	4	4
803,903,85x.x1	Door Drill Template	1	1
609,050,69x.x3	Rain Guard Narrow	0	1
609,050,67x.x1	Rain Guard Wide	1	0
803,601,15x.x1	Tube Sealant	1	1
631,064,60x.x3	Upper Hasp Assembly	1	1
803,903,85x.x1	Cabinet Drill Template	1	1
493,070,06x.x3	Mounting late Cabinet	1	1
800,202,31x.x1	Carriage Bolt 1/4-20x3/4	4	4
900,800,67x.x1	Nut 1/4-20	4	4
803,903,81x.x1	Upper Security Instruction Sheet	1	1
805,411,46x.x1	Shipping Box	1	1
800,303,66x.x1	Self Tapping Screw 1/4-20	2	2

Read these instructions entirely before proceeding with the actual installation of the lock hasp on the machine. If you have any questions, contact the Dixie-Narco Customer Support Center for assistance.

CAUTION: Remove power from the machine by unplugging the main power cord from the wall receptacle before proceeding.

Personal protection equipment including approved safety glasses must be used.

Objects near holes to be drilled need to be protected from damage. Protect objects in the machine from metal filings.

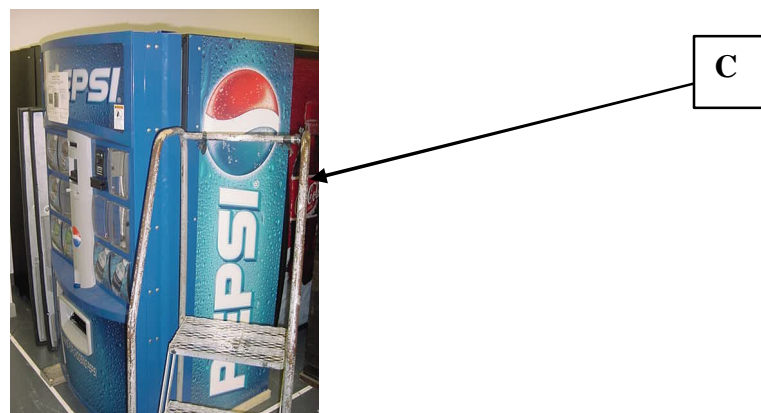
Installation instructions:

1. Obtain tools, open kit, open Vender door. Place parts within easy reach. Unplug Vender.
2. Remove the two upper bolts (A) on the vandal panel. Discard the bolts. Obtain 2 of the ¼-20x 5/8" carriage bolts and side tab combo from the kit. For 276E/501E Venders use small tab (B) and 600E units use large tab. Install the side tab as shown, (side tab will appear different than shown and will have an additional cover plate).



3. Remove the existing rain guard and discard. Retain fasteners. Obtain the new rain guard and sealant from the kit. Apply sealant to the underside of the rain guard where it will contact the door. Install new rain guard on door and secure with hardware removed earlier. The new rain guard will have a notch to clear hasp.
4. Close the Vender securely. Prepare to drill the mounting holes by moving ladder in position (C) to access the top of the Vender. Place the drill, templates, center punch, remaining bolts and hammer on top of the Vender. Ensure the ladder is stable and a spotter is available.

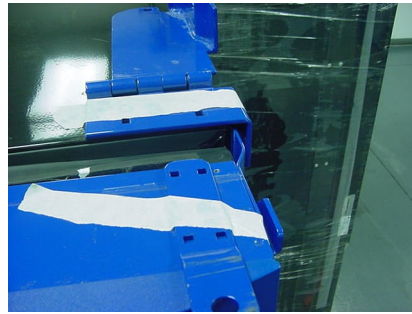
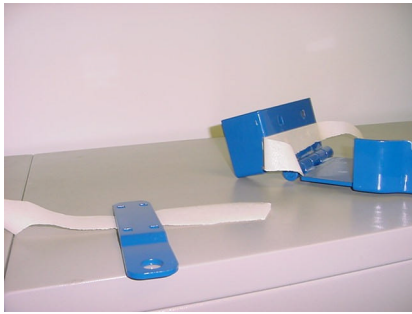
IMPORTANT: SUPPORT THE DOOR WHILE DRILLING.



5. Two methods of marking and drilling the mounting hole locations are available.

a. The preferred method is to lay the parts in place, scribe the holes, drill them, and mount the components and is stated in 6.a.1.

1. **With out templates:** With the door closed, obtain the lower hasp and upper hasp assembly, and place tape across each as shown. Place both parts on Vender, as they would be installed. Ensure lock boltholes are aligned. Position the components to allow optimal clearance on the side and front of unit. A minimum of 1/8" on the front should be allowed to prevent damage to the plastic from a closing hasp. Secure the tape and carefully open the upper hasp. Note that the front to rear slot will allow some adjustment. There is no side-to-side adjustment. Use the center punch to mark all hole centers. Remove all parts and drill holes where indentations mark holes centers. Remove tape from parts and discard tape.



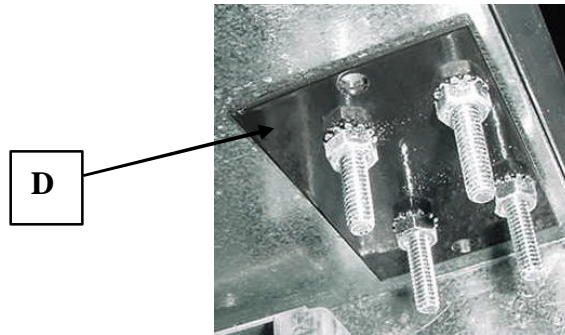
b. The alternate method is to use drill templates provided in kit to locate and drill the mounting holes and mount components and is stated in 6.b.1.

1. **With templates:** With the door open, tape the hole templates in place as shown. Use the center punch to mark all hole centers. Drill the holes where indentations mark the hole centers. Remove tape and templates and discard.



6. Place the hasp assemblies over the mounting holes. Obtain the four 1/4-20x1 3/4 (long) Carriage Bolts and insert into the upper hasp assembly and mounting holes on the cabinet. Obtain the four 1/4-20x1/2 (short) Carriage Bolts and insert into the lower hasp and mounting holes on the door. Remove all tools and hardware from top of Vender. Clean any debris and drill shavings from top of Vender. Carefully dismount ladder.

7. Obtain the interior securing mounting plate (D) provided in the kit and install on interior of cabinet over the four $\frac{1}{4}$ -20x1 $\frac{3}{4}$ (long) and install the $\frac{1}{4}$ -20 nuts on the bolts. Obtain the remaining $\frac{1}{4}$ -20 nuts and mount to the four $\frac{1}{4}$ -20x1/2 (short) Carriage Bolts from lower hasp on the door.



8. Carefully vacuum or wipe up drill shavings. With hasp lifted up and out of the way, close door securely. Close the hasp to check for fit and function. Adjust forward and backward as needed.



9. Ensure no electrical components were accidentally disturbed during installation. If so, correct problem ASAP before any other task is performed on Vender. If not, plug in Vender, check for proper operation, and resume normal operation.
10. Caution operators to completely close door before securing hasp to avoid damage to the plastic parts.